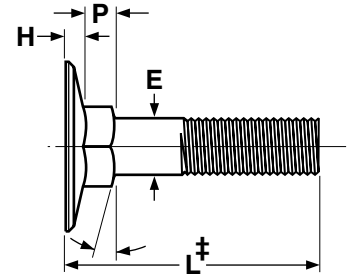
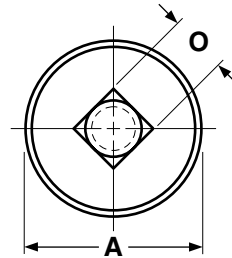




# Bolts & Cap Screws

## Elevator Bolts



Nominal Size	E		A			H		O		P	
	Body Diameter		Head Diameter			Head Height		Square Width		Square Depth	
	Max.	Min.	Max. Edge Sharp	Min. Edge Sharp	Min. Edge Flat	Max.	Min.	Max.	Min.	Max.	Min.
1/4	0.260	0.237	1.008	0.969	0.938	0.098	0.078	0.280	0.245	0.219	0.188
5/16	0.324	0.298	1.227	1.188	1.157	0.114	0.094	0.342	0.307	0.250	0.219
3/8	0.388	0.360	1.352	1.312	1.272	0.145	0.125	0.405	0.368	0.250	0.219

Tolerance on Length	Nominal Bolt Size	Nominal Bolt Length		
		Up to 1 in., incl.	Over 1 in. to 2-1/2 in., incl.	Over 2-1/2 in. to 4 in., incl.
	1/4 thru 3/8	+0.02, -0.03	+0.02, -0.04	+0.04, -0.06

ANSI/ASME B18.5

‡Length of an elevator bolt is measured from the top of the head to the extreme end of the bolt.

**The value-added source for quality bolts, screws, nuts, washers and other industrial fasteners.**

3211 West 9th Street, Trainer, PA 19061-5242 TOLL FREE: 1-800-662-7459 LOCAL: 610-485-5700 FAX: 610-485-5877

E-MAIL: [sales@coburnmyers.com](mailto:sales@coburnmyers.com)